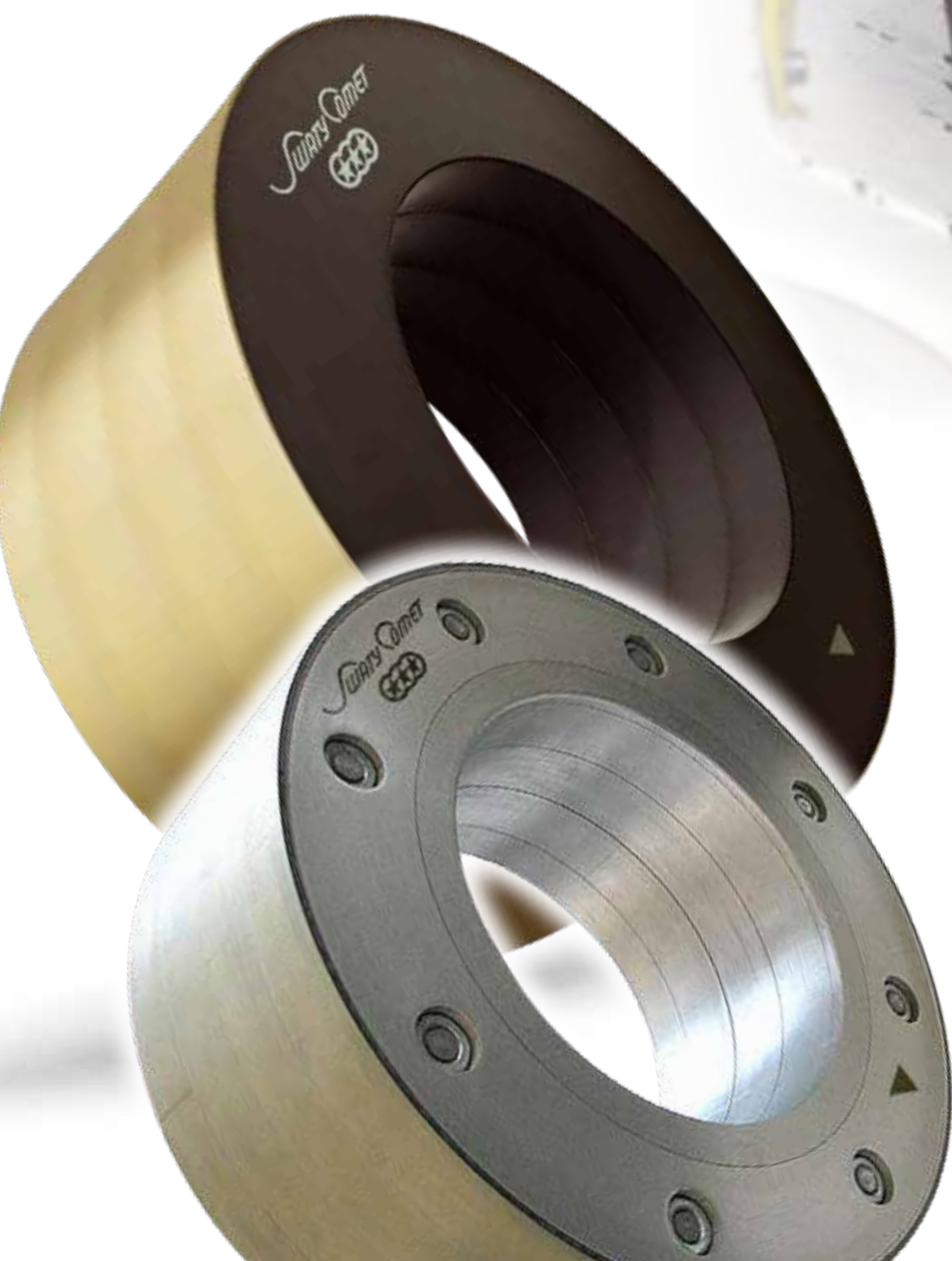


SWATYCOMET SA-CENTERLESS

Superabrasives
grinding tools

This grinding tools are used for the mass production roughing and finishing of cylindrical shape work pieces and the mass production of true round parts .



Superabrasives
grinding wheels
for through-feed
centerless
grinding



NEW GENERATION
PRODUCTS

SWATYCOMET

SA-CENTERLESS



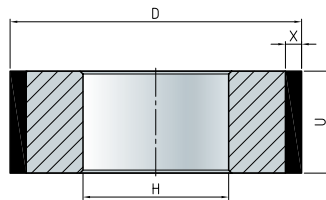
Features:

- faster material removal rates
- good surface finish after fine grinding
- high roundness and cylindricity of workpiece and good dimension consistency
- great profile retention and lifetime
- used for rough grinding, semi-fine grinding and fine grinding.

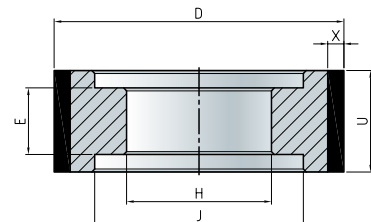
Working material:

Mainly used for grinding tungsten carbide rod blanks, ceramic parts, magnetic material, high speed steel round bars, rings for friction bearings, bearing needles, parts of tripod, etc.

1A1



9A1



Dimensions: D x U x X x H						Composition
D	U	X	H	E (9A1)	J (9A1)	Grit size / Bond / Concentration
100	40	3 / 5	According to specification			Resin bond: for tungsten carbide (WC), high speed steel (HSS), technical ceramics (Al ₂ O ₃), magnetic materials (AlNiCo, SmCo) Metal bond: for technical ceramics (Al ₂ O ₃) Grit size, type of bond and concentration is determined according to applications and customer requirements.
150	20 - 80	3 / 5 / 10				
200	30 - 100	3 / 5 / 10				
250 / 300	50 - 100	3 / 5 / 6 / 8 / 10				
350	60 - 100	3 / 5 / 6 / 10				
400	80 - 250	3 / 5 / 6.4 / 8 / 10				
450	80 - 250	3 / 5 / 10				
500	80 - 250	6.4 / 10 / 12.7				
600	80 - 400	6.4 / 10				

