

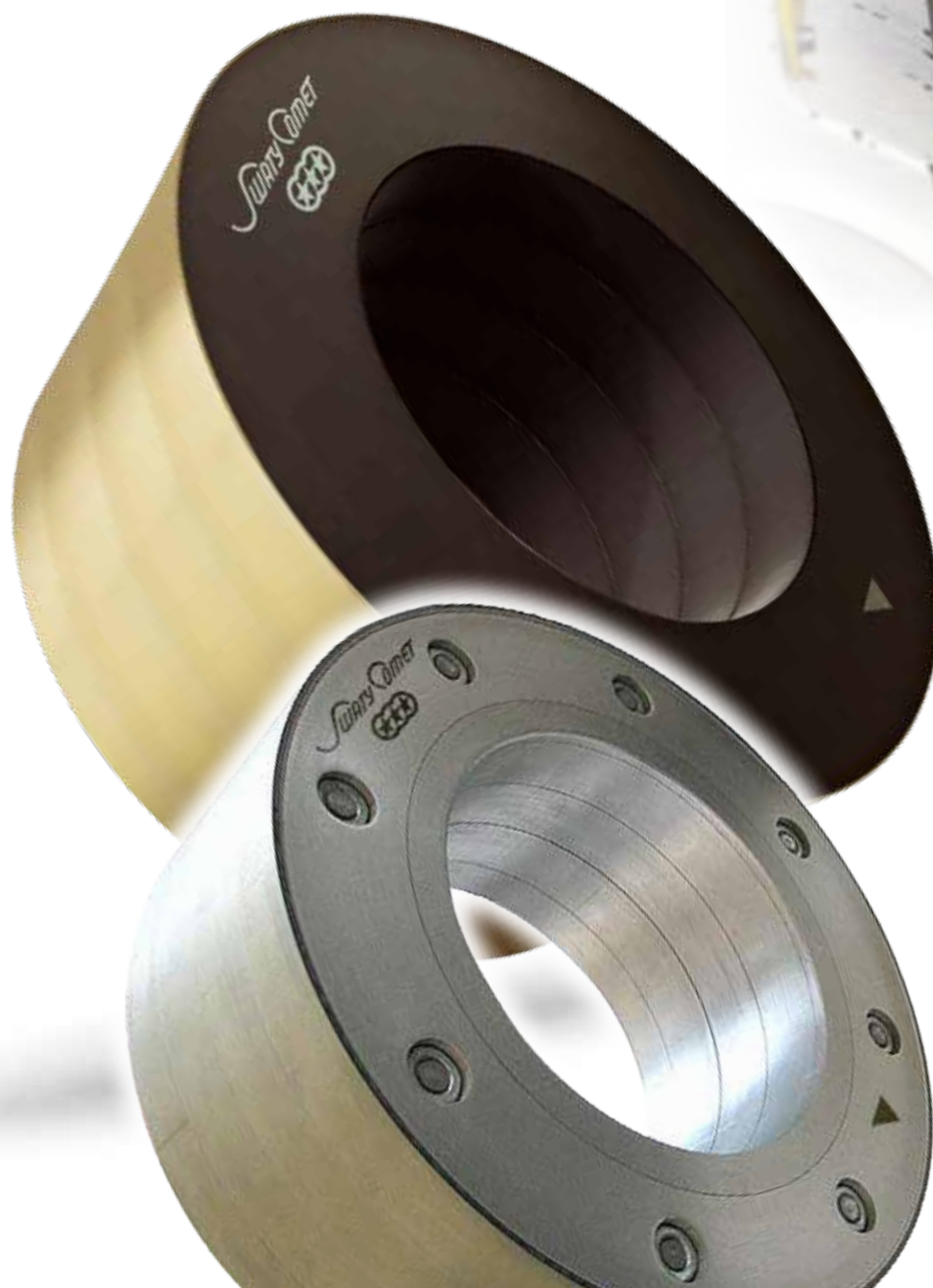
SWATYCOMET SA-CENTERLESS

Superabrasives
grinding tools

This grinding tools are used for the mass production roughing and finishing of cylindrical shape workpieces and the mass production of true round parts.



Superabrasives
grinding wheel
in resin bond
for through-feed
centerless
grinding



**NEW GENERATION
PRODUCTS**

SWATYCOMET

SA-CENTERLESS



Features:

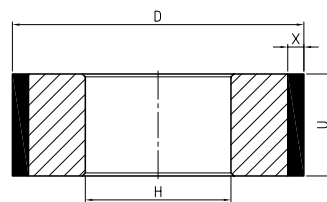
- faster material removal rates
- good surface finish after fine grinding
- high roundness and cylindricity of workpiece and good dimension consistency
- great profile retention and lifetime
- used for rough grinding, semi-fine grinding and fine grinding.

Working material:

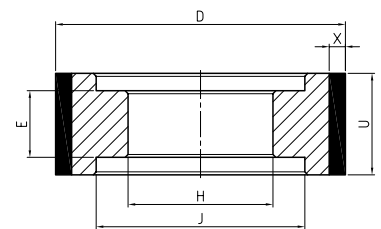
Manly used for grinding tungsten carbide rod blanks, ceramic parts, magnetic material, high speed steel round bars, rings for friction bearings, bearing needles, parts of tripod, etc.



1A1



9A1



Dimensions: D x U x X x H						Composition
D	U	X	H	E (9A1)	J (9A1)	Grit size / Bond / Concentration
100	40	3 / 5	According to specification			Specification according to application
150	20 - 80	3 / 5 / 10				
200	30 - 100	3 / 5 / 10				
250 / 300	50 - 100	3 / 5 / 6 / 8 / 10				
350	60 - 100	3 / 5 / 6 / 10				
400	80 - 250	3 / 5 / 6.4 / 8 / 10				
450	80 - 250	3 / 5 / 10				
500	80 - 250	6.4 / 10 / 12.7				
600	80 - 400	6.4 / 10				

