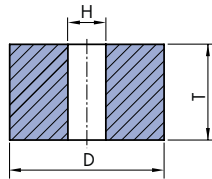




## Brusi 1NB

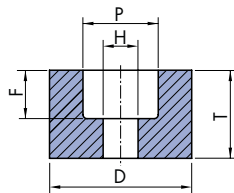
D x T x H



D	T	H
6	6, 10, 13	2,5 3
8	8, 10, 16	2,5 3
10	6, 10, 13, 20	3, 4
13	6, 13, 20	3, 6
16	6, 10, 16	6,
20	13, 20, 25, 32	6, 8
25	13, 20, 25, 32, 40	6, 8, 10
32	13, 20, 25, 32, 40	6, 8, 10, 13
40	13, 20, 25, 32, 40	6, 10, 13, 16
50	13, 20, 25, 32, 40	10, 13, 16, 20
63	13, 20, 25, 32, 40	13, 16, 20
80	13, 20, 25, 32, 40	16, 20, 25
100	16, 25, 32, 40, 50	16, 20, 25

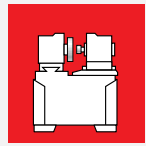
## Brusi 5NB

D x T x H - P x F

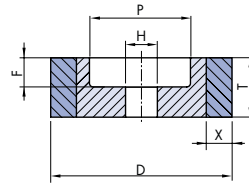


D	T	H	P	F
16	10, 16	6	10	F = max. T/2
20	13, 20	6, 8	13	
25	10, 16, 25	6, 8, 10	16	
32	16, 20, 25, 32	8, 10, 13	20	
40	20, 25, 32, 40	10, 13	25	
50	20, 25, 32, 40	16, 20	32	
63	25, 32, 40, 50	16, 20	32	
80	40, 50, 63	20, 25	40	
100	32, 40, 50	20, 25, 32	52	

Primer za izpis naročila:  
5NB 40x25x10-25x12  
3 LA80J8VL

**CBN-V brusi 1A1**

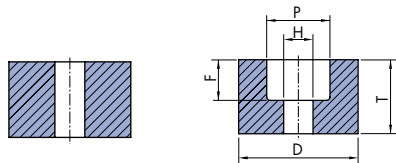
D x T x X x H



D	T	H	X	P	F
25	6-20	4, 6, 8, 10, 12,7	3	po dogovoru	max. T/2
32	6-20	4, 6, 8, 10, 12,7	3		
40	6-20	4, 6, 8, 10, 12,7	3.5		
100	6-20	4, 6, 8, 10, 12,7	3.5		

**CBN-V brusi 1A8**

D x T x H - P x F



D	T	H	P	F
6	4-15	3	po dogovoru	max. T/2
8	2-15	3 (4)		
10	4-16	3 (4)		
13	4-16	4 (6)		
16	4-16	4 (6, 8)		
18	4-16	4 (6)		
20	4-20	6 (8, 10)		

## SPLOŠNA PRIPOROČILA



	Področje uporabe	Kakovostni nivo/gradivo		
		STANDARD	EXTRA	
	<b>Jekla</b>	Univerzalno	3LA80JKV	
		Nekaljeno	4A60KV	
		Kaljena do 62 HRc	2A60JV, GA60JV	B126V
		Kaljena nad 62 HRc	3LA80JKV, 3GA60KV,8A60IV	B126V
		Hitrorezna (HSS)	62A8JV	B126V
		Nerjavna	2A60JV	
		Za ležaje	82A80KLV, 82A100KV	B107V
	<b>Trdine</b>	Karbidna trdina	C80IV	
	<b>Barvne kovine</b>	Al, Cu	C 60JV	
	<b>Litine</b>	Siva, nodularna	3A20OB12, 53C24QB	
	<b>Nekovine</b>	Plastične mase	C60V	